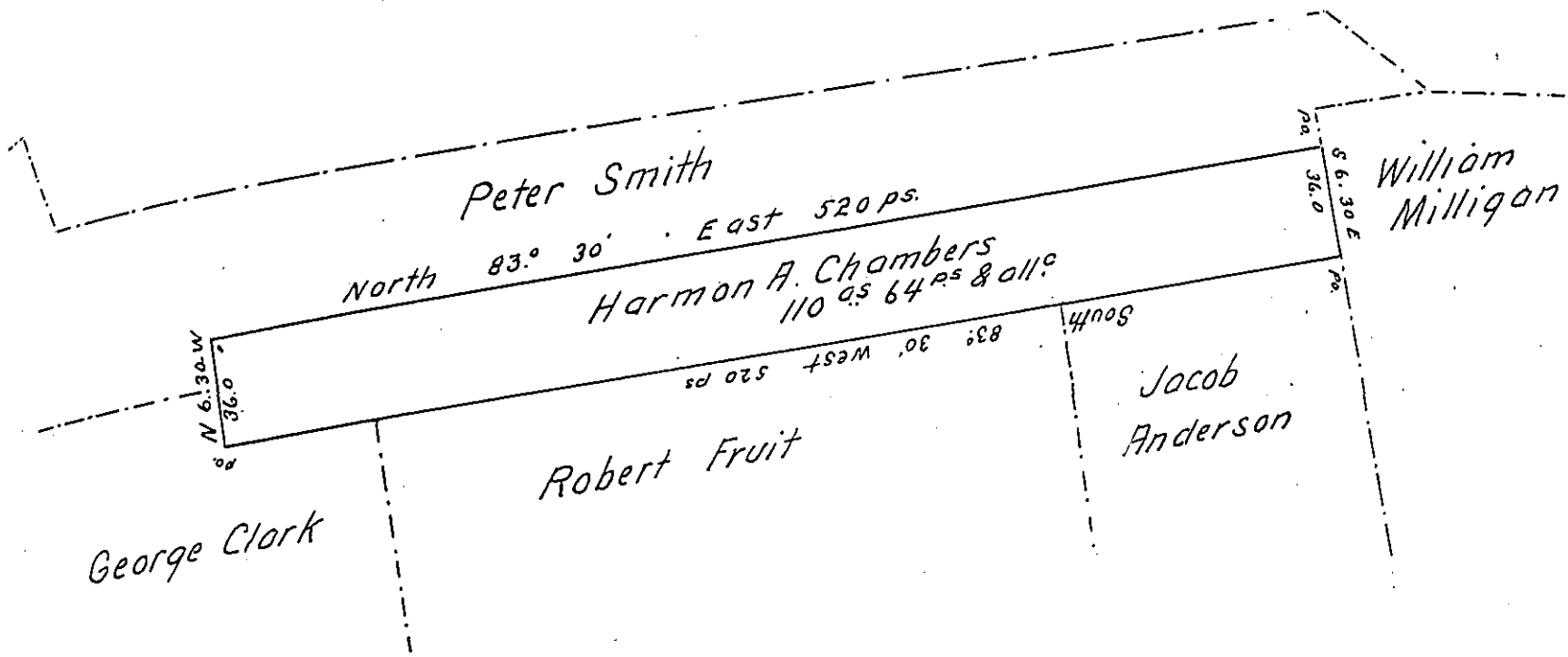


Hazle -
Luzerne



A draft of a Tract of Land, improved, situate in Hazle Township, Luzerne County, Pa. surrounded by and adjoining lands in the warrantee names of Peter Smith on the North, William Milligan on the East, Jacob Anderson, Robert Fruit, and George Clark on the South, and George Clark & Peter Smith on the West, containing One hundred and ten Acres, Sixty four Perches, and the usual allowance of six percent for Roads &c. Surveyed the above described Tract of Land to Harmon A. Chambers, 16th day of January 1873. By virtue of his Warrant Letter H. dated August 23rd 1871.

Hon. Jacob M. Campbell.

R. B. Beath
Surveyor General

J. P. Weller
County Surveyor.

IN TESTIMONY that the above is a copy of the original remaining on file in the Department of Internal Affairs of Pennsylvania, made conformably to an Act of Assembly approved the 16th day of February, 1833, I have hereunto set my Hand and caused the Seal of said Department to be affixed at Harrisburg, this twenty second day of June 1904.

Isaac P. Brown
Secretary of Internal Affairs.